

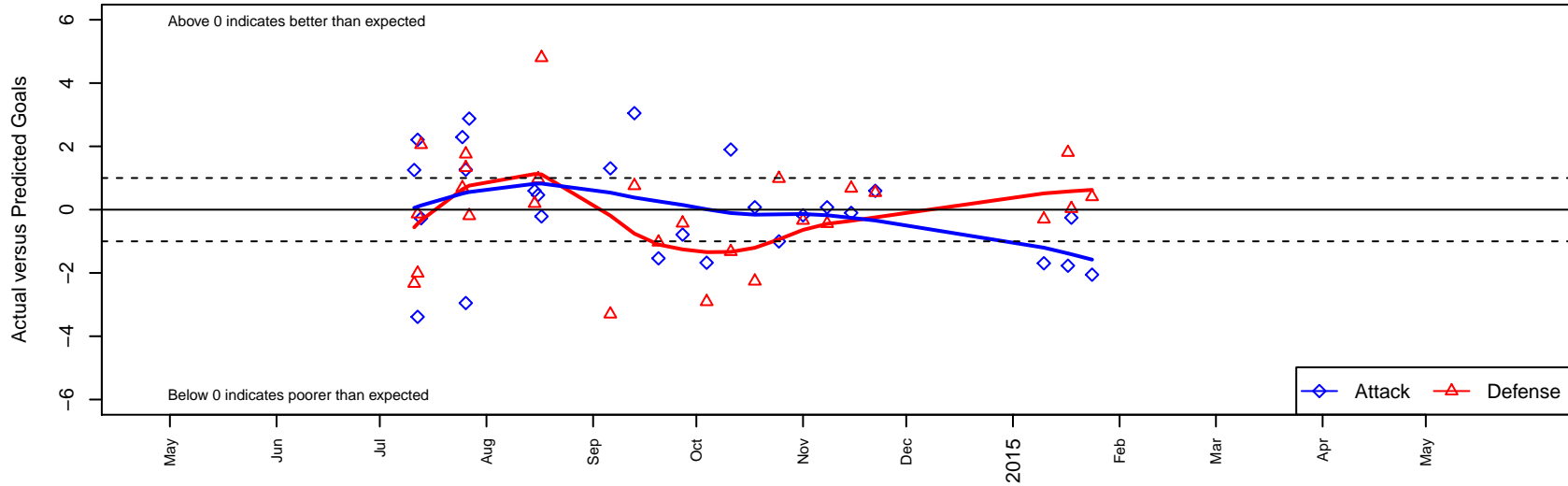
# Kent United Green B03

Kent United  
 Kent, WA  
 B03 total strength=109  
 attack=0.16 defense=0.05  
 fall league = NPSL B11D2

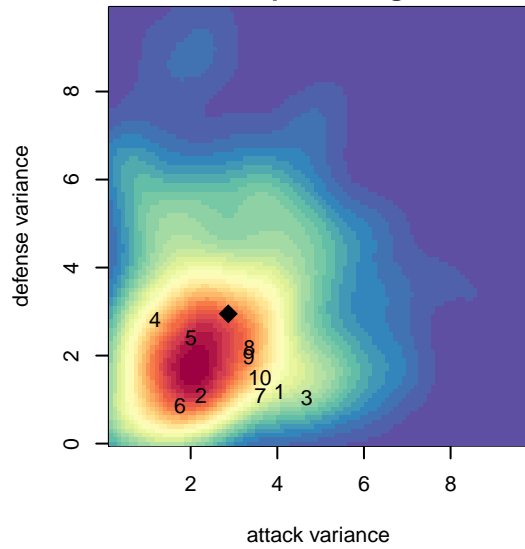
alt names used:  
 KENT UNITED SELECT SOCCER KENT UNIT  
 KU B03 Green  
 KENT UNITED B03 GREEN (WA)  
 Kent United B03 Green  
 Kent United B03 Green

Venues played:  
 2014 Kent Cornucopia Cup U11 Gold U11  
 2014 Crossfire Select Cup BU11 Gold-Silver  
 2014 Bigfoot Bronze U11  
 2014 NPSL B11D2  
 2014 Founders Cup B03

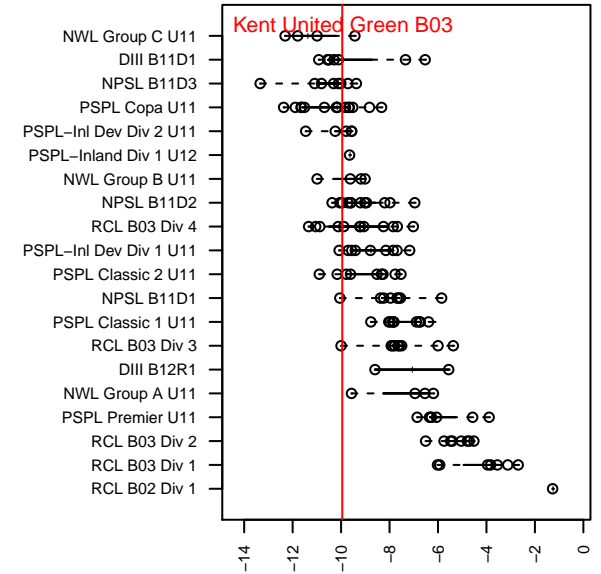
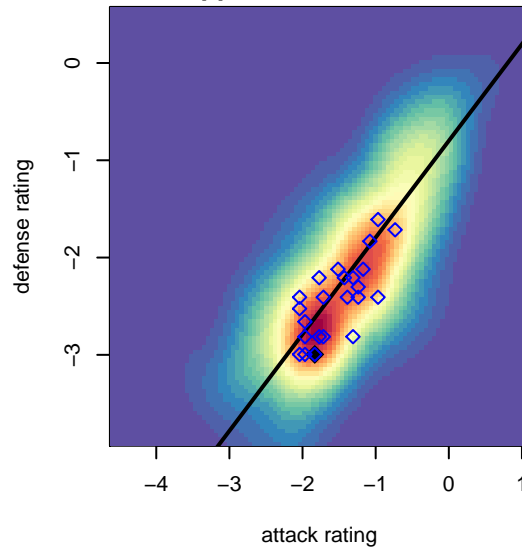
**Kent United Green B03**  
 Dots are actual minus expected GF (blue circles) and GA (red triangles).  
 Blue line is smoothed change in attack strength. Red is smoothed change in defense strength.



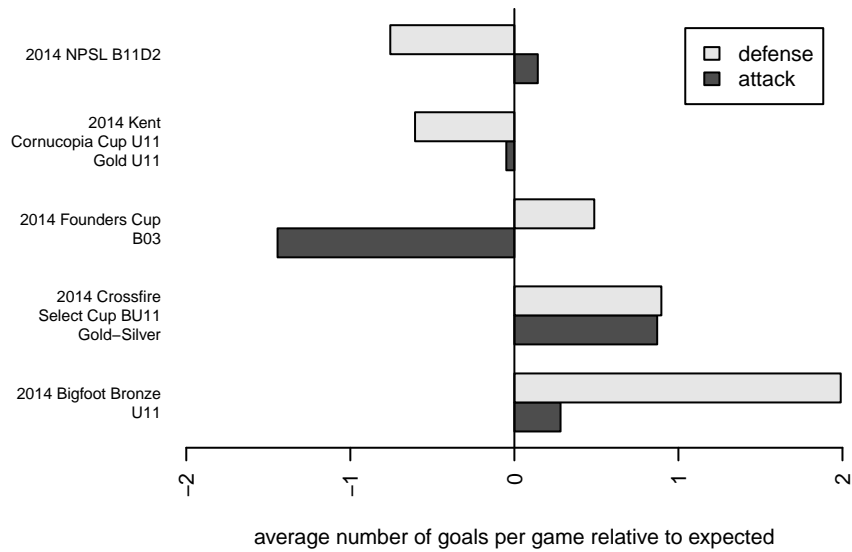
**attack and defense variance (black dot)  
relative to other teams  
and top 10 in region**



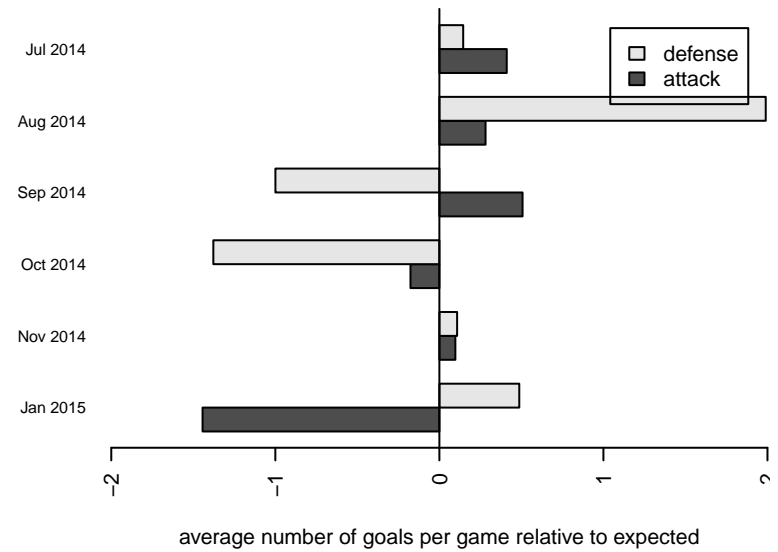
**attack and defense rating  
relative to others at age  
and all opponents in last 13 months**



**Performance relative to 13 month average**



**Performance relative to 13 month average**



date	home		away		venue	pred.home	pred.away
2015-01-24	Kent United Green B03	1	SCORE Eagles Red B03	2	2014 Founders Cup B03	3.05	2.41
2015-01-18	Seattle United NE Blue B03	3	Kent United Green B03	3	2014 Founders Cup B03	3.03	3.25
2015-01-17	Kent United Green B03	0	Seattle United S Blue B03	4	2014 Founders Cup B03	1.77	5.81
2015-01-10	NSC Galaxy B03	6	Kent United Green B03	0	2014 Founders Cup B03	5.70	1.69
2014-11-22	Kent United Green B03	4	Crossfire Select Pratt B03	2	2014 NPSL B11D2	3.40	2.54
2014-11-15	Kent United Green B03	2	Mukilteo Rush B03	2	2014 NPSL B11D2	2.10	2.67
2014-11-08	Storm King B03	8	Kent United Green B03	2	2014 NPSL B11D2	7.56	1.93
2014-11-01	Kent United Green B03	2	NSC Revolution B03	4	2014 NPSL B11D2	2.18	3.66
2014-10-25	Kent United Green B03	0	NSC Nitro B03	7	2014 NPSL B11D2	1.00	7.98
2014-10-18	BYSC Select A B03	6	Kent United Green B03	3	2014 NPSL B11D2	3.74	2.92
2014-10-11	Mukilteo Rush B03	4	Kent United Green B03	4	2014 NPSL B11D2	2.67	2.10
2014-10-04	Kent United Green B03	1	BIFC Blue B03	8	2014 NPSL B11D2	2.68	5.09
2014-09-27	Seattle United W White B03	4	Kent United Green B03	1	2014 NPSL B11D2	3.57	1.79
2014-09-20	Lake Hills Legacy B03	4	Kent United Green B03	1	2014 NPSL B11D2	2.97	2.54
2014-09-13	Kent United Green B03	6	Seattle United S White B03	2	2014 NPSL B11D2	2.95	2.76
2014-09-06	NSC Galaxy B03	9	Kent United Green B03	3	2014 NPSL B11D2	5.70	1.69
2014-08-17	Snohomish United Black B04	2	Kent United Green B03	1	2014 Bigfoot Bronze U11	6.80	1.21
2014-08-16	Lake Hills Legacy B03	2	Kent United Green B03	3	2014 Bigfoot Bronze U11	2.97	2.54
2014-08-15	Kent United Green B03	2	FC Edmonds Force B03	4	2014 Bigfoot Bronze U11	1.41	4.19
2014-07-27	Kent United Green B03	5	Kitsap Pumas 1 B03	5	2014 Crossfire Select Cup BU11 Gold-Silv	2.12	4.81
2014-07-26	Kent United Green B03	3	FC Edmonds Velocity B03	4	2014 Crossfire Select Cup BU11 Gold-Silv	1.74	5.33
2014-07-26	Seattle United S White B03	1	Kent United Green B03	0	2014 Crossfire Select Cup BU11 Gold-Silv	2.76	2.95
2014-07-25	Kent United Green B03	4	TSS Academy B03	5	2014 Crossfire Select Cup BU11 Gold-Silv	1.71	5.69
2014-07-13	Kent United Green B03	3	Kent United White B03	0	2014 Kent Cornucopia Cup U11 Gold U11	3.27	2.05
2014-07-12	Kent City Red B03	10	Kent United Green B03	3	2014 Kent Cornucopia Cup U11 Gold U11	9.86	0.79
2014-07-12	Kent United Green B03	1	Seattle United Shoreline White B03	4	2014 Kent Cornucopia Cup U11 Gold U11	4.39	1.99
2014-07-11	Eastside FC Grey B03	8	Kent United Green B03	3	2014 Kent Cornucopia Cup U11 Gold U11	5.67	1.75